



www.kings-group.net

186 Hertford Road
Enfield EN3 5AZ
Tel: 020 8805 5959

Harston Drive, Enfield, EN3 6GP
Offers In The Region Of £200,000

- One Bedroom Flat
- Communal Grounds, Gardens & Parking
- Long Lease
- Close Proximity to local shops & amenities

KINGS GROUP is thrilled to present this charming ONE BEDROOM flat located in the highly desirable ENFIELD ISLAND VILLAGE. This beautiful property, nestled in the historic Harston Drive, offers a rare opportunity to own a piece of history as it is a grade II listed flat with character features such as high ceilings.

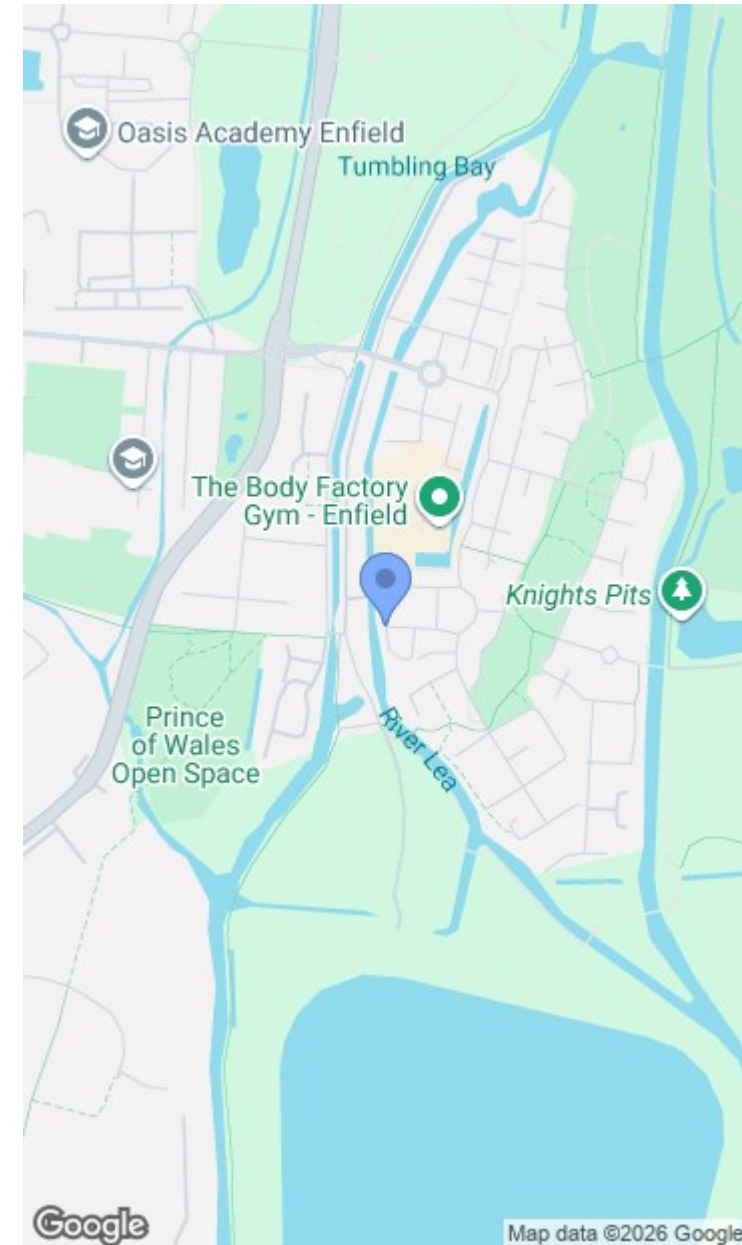
The location of this flat is truly unbeatable, being in close proximity to all local shops and amenities, as well as the convenient Enfield Lock Train Station providing direct access to Tottenham Hale and London Liverpool Street. Whether you are looking for a cozy home or a lucrative buy-to-let investment, this property ticks all the boxes.

Step inside to discover a modern fitted kitchen, a stylish three-piece bathroom, a spacious lounge, and a comfortable bedroom. The communal grounds, gardens, and parking add to the appeal of this wonderful property, making it a perfect place to call home.

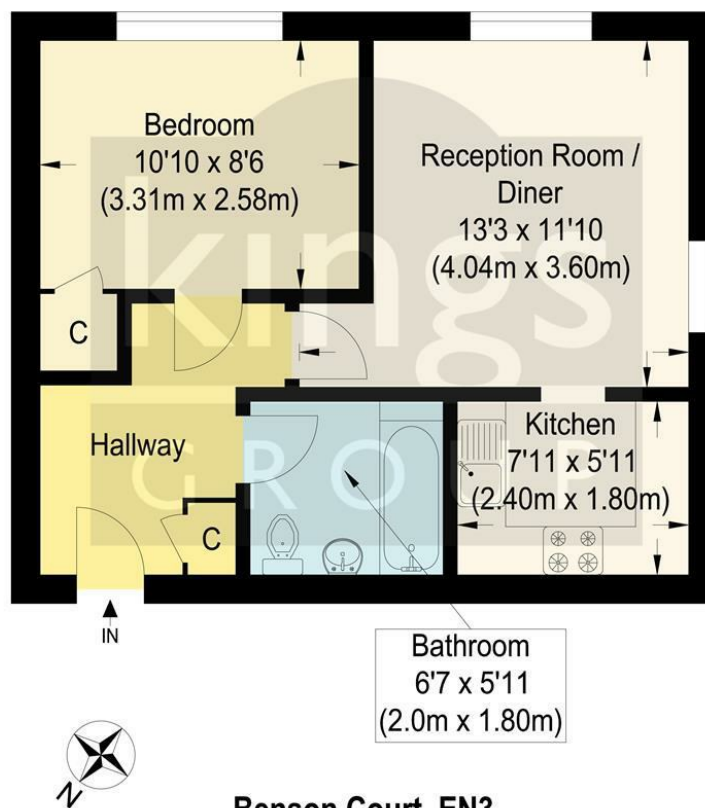
Don't miss out on the opportunity to own this well-maintained gem in Enfield. Contact Kings Group today to arrange a viewing and make this flat your own!

Service charge £1780
 Estate rent charge - £300PA
 Ground Rent - £0
 Water - Included
 Building Insurance - £420PA (approx)

- Grade II Listed
- High Ceilings & Character Features
- Situated Within the Sought After Enfield Island Village
- Great access into Tottenham Hale & London Liverpool Street







Benson Court, EN3

Approximate Gross Internal Floor Area : 37.40 sq m / 402.57 sq ft

Illustration for identification purposes only, measurements are approximate, not to scale.

